

# SN NEWSLETTER

*“To excel in Nursing for the well-being of mankind”*

COVER STORY

## School leapt to 31<sup>st</sup> in the world



The School reversed our rank slide last year and made a big leap forward to secure 31<sup>st</sup> place in the Quacquarelli Symonds Limited (QS) World University Rankings by Subject 2024. We achieved a significant score increase in employer reputation, from 58.4 in 2023 to 76.4. This, together with our improvement in other scores, putting us in one of the top 4<sup>th</sup> nursing schools in Asia.

The QS ranking is considered one of the most influential university rankings in the world. The 2024 edition of the QS World University Rankings by Subject features 55 individual subjects and 1,559 institutions have been ranked across these subjects this year. The rankings are listed based on academic reputation, employer reputation and research impact.

Year	2024	2023
Ranking of the School	31	51-100
Overall score	84.6	N/A
Academic reputation	81.1	85.3
Employer reputation	76.4	58.4
Citations per paper	91.9	87.6
H-index citations	83.4	77.5

Data retrieved from <https://www.topuniversities.com/university-subject-rankings/nursing>

## First psychiatric simulated clinical placement

The School launched the first psychiatric simulated clinical placement from 2 to 12 January to increase preparedness of our mental health nursing students for real hospital clinical placement.

The simulated placement was jointly designed by the School's mental health clinical team and the clinical experts from the Hospital Authority. It took place in the School's nursing laboratories, and replicated a hospital's psychogeriatric ward setting to allow participating students to familiarise with the ward setting so that they are fully prepared for their practice and are able to identify the situational risks in their further working environment. The simulated placement also aims to enhance students' ability in communicating with patients and healthcare professionals, provide opportunities for practising specific skills to deal with real-life clinical situations in a safe environment, and promote student active learning through discussions in the debriefing sessions.

Under the supervision of our Assistant/Associate Professors of Practice, 72 year-3 undergraduate mental health nursing students acted as psychiatric student nurses to perform daily routine duties and nursing procedures (such as checking patients' vital signs, setting up an intravenous infusion, administering injections, wound dressing and blood transfusion, etc.), to the 'patients' in the 'psychogeriatric ward.' A case scenario was delivered in every clinical day to train students' abilities in handling emergency situations, which included fire evacuation, managing patients with cardiac arrest, suicidal attempt, violence outburst, and absconded tendency. The students also acted as patients with mental illness to experience patients' perspectives during their engagement and communication with health care workers or professionals.

'During a simulated case of suicide attempt, we first put the patient on a wheel-chair to bring him to the bed. We tried to calm down the patient but we failed. Then, we considered physically restrained the patient.....I have learnt different ways and methods to handle an emergency and my practical skills have been refreshed,' said Ms Hei-yi Lam, a year-3 mental health nursing student.

The 40-hour psychiatric simulated learning activity includes pre-and-post simulation briefing and debriefing, learning consolidation through reflective journals and evaluation. The students' ability in managing both general and mental health nursing procedures were assessed. Remedial training was offered to those students with identified weakness during the simulation sessions.



The School's nursing laboratories replicated a hospital's psychogeriatric ward setting to enhance students' awareness of situational risks.



'Student nurses' were assessed in the simulated sessions for their wound dressing skills and ability in leading a therapeutic group activity.



The 'student nurses' learnt how to handle an absconded patient.

## Over 2.8 mil grants received to explore effects of Chinese medicine/therapy on brain/ diabetes

**Dr Grace Xie**, and **Dr Janice Ho**, both Associate Professors, received a grant of HKD 1.67 million and HKD 1.13 million, respectively from the Chinese Medicine Development Fund - Industry Support Programme. Dr Xie will carry out a study that compares the effects of Tai Chi and acupuncture in the prophylaxis of episodic migraine and the associated microstructural changes in brain white matter among Hong Kong Chinese women. Dr Ho will develop a Chinese medicine diabetes mellitus management programme and conduct a preliminary trial to explore its effectiveness.

## SN captured two awards at EAFONS

**Prof. Janelle Yorke**, Chair Professor of Nursing and Head of the School, led a large group of our academic staff members and students (nearly 20 students including our undergraduate students) to participate in the 27<sup>th</sup> East Asian Forum of Nursing Scholars (EAFONS) held in Hong Kong from 6 to 7 March.

Our first-year PhD student, **Ms Yule Hu** [Photo 2: 1<sup>st</sup> from right] (Supervisor: Dr Yan Li, Assistant Professor-Presidential Young Scholar; Co-supervisor Prof. Angela Leung, Associate Head in Research & Professor) won the **Best Poster Award** at the event. Her poster highlighted the systematic review and meta-analysis that she has been conducting to explore the effectiveness of telehealth interventions on cognitive function in patients with neurological disorders. **Dr Yan Li** (Photo 2: 4<sup>th</sup> from left), won the **Best Oral Presentation Award** for her study titled 'A Mindfulness and Motivational Interviewing-Oriented Physical-Psychological Integrative Intervention for Community-Dwelling Spinal Cord Injury Survivors'. **Claudia Lai**, our Honourary Professor, was invited to share her experience and spoke about Implementation Science in Doctoral Nursing Education in one of the symposia.



1 Our active participation gave a strong support to EAFONS.



2 Congratulations to the winners!

## Music-with-Movement Programme ended with great success

The closing ceremony of the Standalone Therapeutic Music-with-Movement Programme was held on 23 March, which marked the successful adoption of the School's gerontechnological innovation in the community for caring older adults with cognitive impairment.

The Standalone Therapeutic Music-with-Movement Programme is significant in transforming the way psychosocial interventions are delivered in elderly care settings. Integrated with augmented reality technology, motion-sensing music instruments, and an intelligent cloud-based platform that enables storage and analysis of data for monitoring of the players' cognitive and physical condition, the Music-with-Movement intervention, is a fun-filled tablet-based activity that offers cognitive stimulation and social interaction opportunities to older adults with cognitive impairment.

Our preliminary research evidence has showed that the programme is effective in promoting memory functions and their perceived social support of older adults with cognitive impairment. Those with mild cognitive impairment, in addition, presented with enhanced general well-being. Those centre staff members and caregivers who had received our training to deliver the intervention were found improved in knowledge and attitudes towards dementia.

The programme was implemented in 56 local elderly service centres in the past two years. It served more than 1,000 older adults with cognitive impairment, trained 140 centre staff members and caregivers to deliver the intervention. In addition, 150 nursing students from the School involved in the programme gained hands-on experiences in the community settings. The creativity and uniqueness of the programme have been recognised by the Hong Kong Information and Communications Technology (ICT) Awards in 2022, the Claudia J. Beverly Innovation Award from the National Hartford Center of Gerontological Nursing Excellence in 2023, and the Innovation Awards at the Consumer Electronics Show held at the United States this year.



The representatives of the Ho Cheung Suk Yuen Charitable Foundation (the programme funder) [1<sup>st</sup> row, from left: Dr Liliane Chan (2<sup>nd</sup>) and Ms Rose Ho (3<sup>rd</sup>); from right: Ms Jean Ho (4<sup>th</sup>), alongside with Dr Laura Lo, Associate Vice President (Institutional Advancement) of PolyU (1<sup>st</sup> row 4<sup>th</sup> from left), the project team, Prof. Janelle Yorke, Chair Professor of Nursing and Head of the School, and our collaborative partners from 22 elderly centres/care services for older adults, in celebration of the outstanding achievement of the programme.

## Project on robot-mediated intervention received HMRF support

**Dr Ivy Zhao**, Research Assistant Professor, has been awarded a sum of HKD 500,000 from the Health and Medical Research Fund of the Health Bureau to carry out a pilot randomised controlled trial to explore the feasibility and effectiveness of a Robot-mediated Interactive Intervention in supporting current home care services to reduce loneliness in older adults.

## WHO Collaborating Centre for Community Health Services

### *Capacity-building for implementing WHO's ICOPE*

The Integrated care for older people (ICOPE) training was held for the social workers of the Christian Family Service Centre from 7 to 8 March.

The School's World Health Organization Collaborating Centre for Community Health Services developed a training package to facilitate local adoption of the World Health Organization's ICOPE framework. Currently, training has been organising in the District Health Centres and non-governmental organisations to promote the use of the ICOPE tool in evaluating the intrinsic capacity of older people and early identification for declining capacity for referral to receive comprehensive health assessment.



### PhD Research Showcase

#### *Nurse-led transitional burns rehabilitation programme for adult burn survivors*

Rehabilitation from a burn injury is a lengthy process and nurses can play an active role in providing continuous care after patient discharge to optimise their rehabilitation outcomes.

In his PhD project, **Mr Jonathan Bayuo** (Supervisor: **Prof. Frances Wong**, Chair Professor of Advanced Nursing Practice & Associate Dean [FHSS]), currently Research Assistant Professor of the School, proposed a comprehensive, transitional, and relatively cost-effective nurse-led home-based burn care programme to improve rehabilitation outcomes of discharged burn survivors, especially those living in areas with limited resources and limited professional support.

The Nurse-Led Transitional Burns Rehabilitation Programme was developed following the Medical Research Council Framework. It is unique in its application of the Omaha System to comprehensively assess and identify care needs of burn survivors in environmental, physiological, psychosocial, and health-related behaviour domains for pairing of appropriate interventions. The site of the research study was a hospital in Gansu, Lanzhou, a less resourced area in Mainland China.

The Nurse-Led Transitional Burns Rehabilitation Programme was delivered by burn care nurse case managers through telehealth and telephone follow-ups to 30 participants in the intervention group for a duration of eight weeks. The interventions were given by the case managers based on the care need identified prior to patient discharge and ongoing assessment undertaken on a weekly basis.

The results showed that the programme significantly improved the quality of life, physical role functioning, and reduced anxiety and depression of the participants in the intervention group. Pain intensity improvement was also observed at 12 weeks post-intervention. These findings suggest that the programme could be a sustainable global solution providing continuous, comprehensive, and coordinated burn rehabilitative care. Additionally, the findings suggest that burn care nurses' role could be extended beyond hospitals.

The conceptualisation and potential implications of the study impressed Sigma Theta Tau International Honor Society of Nursing and a Small Research Grant (2020-2021) was awarded to support the implementation of the nurse-led rehabilitation care programme. More recently, the programme has been adapted in a collaborative project for implementation in Pakistan. Jonathan has been awarded HK\$ 300,000 from the PolyU Start-up Fund for Research Assistant Professors under the Strategic Hiring Scheme, for carrying out a qualitative study on post-burn recovery experiences of paediatric burn survivors and their caregivers. The sexuality component of the rehabilitation programme has been highlighted to inform clinical guidelines by the European Burns Association.

After completing his PhD study in 2022, Jonathan and his supervisor continued to publish their research findings in international journals. In December 2023, his research efforts were recognised internationally as he was selected to receive a Fellowship (Fellow by Examination) of the Faculty of Nursing & Midwifery in Royal College of Surgeons in Ireland (FFNMRC SI).

Click [here](#) to view Dr Jonathan Bayuo's PhD thesis titled 'Effects of A Nurse-Led Transitional Burns Rehabilitation Program for Adult Burn Survivors: A Pilot Randomized Controlled Trial.'



The School is honoured to have Dr Jonathan Bayuo (left in the photo), our PhD graduate, named Fellow of the FFNMRC SI. Next to Jonathan is Prof. Jonas Nguh from Walden University, the US, who was also conferred Fellow at the same occasion.

## Research publications

- Abu-Odah, H., Wang, M., Su, J. J., Collard-Stokes, G., Sheffield, D., & Molassiotis, A. (2024). Effectiveness of dance movement therapy and dance movement interventions on cancer patients' health-related outcomes: A systematic review and meta-analysis. *Supportive Care in Cancer* 32(4), 235. <https://doi.org/10.1007/s00520-024-08431-4>
- Aunguroch, Y., Gunawan, J., Juanamasta, I. G., & Montayre, J. (2024). Updating factors influencing nurse work engagement in the hospital settings: a systematic review. *Journal of Healthcare Leadership*, 16, 157-176. <https://doi.org/10.2147/JHL.S451056>
- Cai, H., Chen, P., Jin, Y., Zhang, Q., Cheung, T., Ng, C. H., Xiang, Y. T., & Feng, Y. (2024). Prevalence of sleep disturbances in children and adolescents during COVID-19 pandemic: a meta-analysis and systematic review of epidemiological surveys. *Translational Psychiatry*, 14(1), Article 12. <https://doi.org/10.1038/s41398-023-02654-5>
- Chen, J., Li, Y. T., Niu, Z., He, Z., Xie, Y. J., Hernandez, J., ... & Guangzhou Diabetic Eye Study Group. (2024). Association of Visceral Obesity Indices with incident diabetic retinopathy in patients with diabetes: prospective cohort study. *JMIR Public Health and Surveillance*, 10(1), e48120. <https://publichealth.jmir.org/2024/1/e48120>
- Chen, M. Y., Chen, P., An, F. R., Sha, S., Feng, Y., Su, Z., Cheung, T., Ungvari, G. S., Ng, C. H., Zhang, L., & Xiang, Y. T. (2024). Depression, anxiety and suicidality among Chinese mental health professionals immediately after China's dynamic zero-COVID policy: A network perspective. *Journal of Affective Disorders*, 352, 153-162. <https://doi.org/10.1016/j.jad.2024.01.270>
- Chen, M. Y., Wang, Y. Y., Si, T. L., Liu, Y. F., Su, Z., Cheung, T., Ungvari, G. S., Jackson, T., Zhang, Q., & Xiang, Y. T. (2024). Poor sleep quality in schizophrenia patients: A systematic review and meta-analyses of epidemiological and case-control studies. *Schizophrenia Research*, 264, 407-415. <https://doi.org/10.1016/j.schres.2024.01.011>
- Chen, M. Y., Zheng, W. Y., Liu, Y. F., Li, X. H., Lam, M. I., Su, Z., Cheung, T., Ungvari, G. S., Tang, L., Ng, C. H., Zhang, Q., & Xiang, Y. T. (2024). Global prevalence of poor sleep quality in cancer patients: A systematic review and meta-analysis. *General Hospital Psychiatry*, 87, 92-102. <https://doi.org/10.1016/j.genhosppsych.2023.12.004>
- Chen, P., Sun, H. L., Li, D. H., Feng, Y., Su, Z., Cheung, T., Cui, X. L., Ungvari, G. S., Jackson, T., An, F. R., & Xiang, Y. T. (2024). A comparison of psychiatric symptoms between mental health professionals with and without post-infection sequelae of COVID-19. *Psychiatry Research*, 331, Article 115631. <https://doi.org/10.1016/j.psychres.2023.115631>
- Cheung, K., & Yip, C.S. (2024). Documentation completeness and nurses' perception on a novel electronic application on medical resuscitation in the emergency room. *JMIR mhealth uhealth*, 12, e46744. <https://doi.org/10.2196/46744>
- Deng, Y., Ngai, F. W., Qin, J., Yang, L., Wong, K. P., Wang, H. H., & Xie, Y. J. (2024). Combined influence of eight lifestyle factors on metabolic syndrome incidence: a prospective cohort study from the MECH-HK Study. *Nutrients*, 16(4), Article 547. <https://doi.org/10.3390/nu16040547>
- Deng, Y., Wang, H. H., Ngai, F. W., Zhang, D., Qin, J., Chen, X., & Xie, Y. J. (2024). Associations of combined lifestyle index with migraine prevalence and headache frequency: a cross-sectional study from the MECH-HK study. *Journal of Headache and Pain*, 25(1), Article 24. <https://doi.org/10.1186/s10194-024-01729-y>
- Gui, Z., Wang, Y. Y., Li, J. X., Li, X. H., Su, Z., Cheung, T., Lok, K. I., Ungvari, G. S., Ng, C. H., Zhang, Q., & Xiang, Y. T. (2024). Prevalence of poor sleep quality in COVID-19 patients: a systematic review and meta-analysis. *Frontiers in Psychiatry*, 14, Article 1272812. <https://doi.org/10.3389/fpsyt.2023.1272812>
- Li, J., Chan, E. A., Li, M., Lam, Y. P., Wong, A. Y. L., Cheung, J. P. Y., & Li, Y. (2024). "Am I different?" Coping and mental health among teenagers with adolescent idiopathic scoliosis: A qualitative study. *Journal of Pediatric Nursing*, 75, e135-e141. <https://doi.org/10.1016/j.pedn.2024.01.004>
- Li, Z., Gu, J., Li, P., Hu, J., Wang, S., Wang, P., Zhou, L., Yun, Y., Shi, Y., & Wang, P. (2024). The relationship between social frailty and loneliness in community-dwelling older adults: a cross-sectional study. *BMC Geriatrics*, 24(1), Article 73. <https://doi.org/10.1186/s12877-024-04666-2>
- Liang, S., Chen, Z., Tang, W., Andarini, E., Kou, L., Li, Y., & Cai, W. (2024). Prevalence and predictors of help-seeking behavior among post-partum women with urinary incontinence in China and Indonesia: A cross-sectional survey based on Andersen Help-Seeking Model. *Midwifery*, 128, Article 103885. <https://doi.org/10.1016/j.midw.2023.103885>
- Meng, J., Liu, J. Y. W., Yang, L., Wong, M. S., Tsang, H., Yu, B., Yu, J., Lam, F. M. H., He, D., Yang, L., Li, Y., Siu, G. K. H., Tyrovolas, S., Xie, Y. J., Man, D., & Shum, D. H. K. (2024). An AI-empowered indoor digital contact tracing system for COVID-19 outbreaks in residential care homes. *Infectious Disease Modelling*, 9(2), 474-482. <https://doi.org/10.1016/j.idm.2024.02.002>
- Pang, C. P. P., Chiang, C. L. V., & Cheung, D. S. K. (2024). A visual art intervention program for older people with stroke in residential care settings: A feasibility study. *Scandinavian Journal of Caring Sciences*. <https://doi.org/10.1111/scs.13233>

## Research publications (con't)

- Sun, H. L., Zhang, Q., Si, T. L., Bai, W., Chen, P., Lam, M. I., Lok, K. I., Su, Z., Cheung, T., Ungvari, G. S., Jackson, T., Sha, S., & Xiang, Y. T. (2024). Interactive changes in depression and loneliness symptoms prior to and during the COVID-19 pandemic: A longitudinal network analysis. *Psychiatry Research*, 333, Article 115744. <https://doi.org/10.1016/j.psychres.2024.115744>
- Sun, H. L., Zhao, Y. J., Sha, S., Li, X. H., Si, T. L., Liu, Y. F., Su, Z., Cheung, T., Chang, A., Liu, Z. M., Li, X., Ng, C. H., An, F. R., & Xiang, Y. T. (2024). Depression and anxiety among caregivers of psychiatric patients during the late stage of the COVID-19 pandemic: A perspective from network analysis. *Journal of Affective Disorders*, 344, 33-40. <https://doi.org/10.1016/j.jad.2023.09.034>
- Wang, S., Qin, J., Cheung, D. S. K., Tyrovolas, S., Leung, S. H. I., Leung, A. Y. M., & Davidson, P. M. (2024). E-bibliotherapy for improving the psychological well-being of informal caregivers of people with dementia: a randomized controlled trial protocol. *BMC Nursing*, 23(1), Article 84. <https://doi.org/10.1186/s12912-024-01706-5>
- Wang, W., Liang, J., Zhang, D., Xu, Z., Chan, D. C., Xie, G. Y., ... & Wong, S. Y. (2024). Associated factors of loneliness among primary school students. *Journal of Social and Personal Relationships*, 02654075241228798. <https://doi.org/10.1177/02654075241228798>
- Xu, X., Peng, Q., Meng, L., Yang, H., Wang, Y., Luo, Y., Dong, M., Wang, C., & Wang, M. (2024). Quality assessment of clinical practice guidelines for adult obstructive sleep apnea: A systematic review. *Sleep Medicine*, 118, 16-28. <https://doi.org/10.1016/j.sleep.2024.03.045>
- Yang, H., Lu, S., & Yang, L. (2024). Clinical prediction models for the early diagnosis of obstructive sleep apnea in stroke patients: a systematic review. *Systematic Reviews*, 13(1), Article 38. <https://doi.org/10.1186/s13643-024-02449-9>
- Zhou, L., Zhou, J., Shuai, H., Xu, Q., Tan, Y., Luo, J., Xu, P., Duan, X., Mao, X., Wang, S., & Wu, T. (2024). Comparison of perioperative outcomes of selective arterial clipping guided by near-infrared fluorescence imaging using indocyanine green versus undergoing standard robotic-assisted partial nephrectomy: a systematic review and meta-analysis. *International journal of surgery (London, England)*, 110(2), 1234-1244. <https://doi.org/10.1097/JS9.0000000000000924>

## Cancer survivor's PhD study brings deeper understanding of cancer self-management



'PhD study in PolyU has helped me enhance critical thinking and academic writing skills. I have gained experience in carrying out systematic or integrative literature reviews.' said Ms Mar Lar Aung.

In February 2016, **Ms Mar Lar AUNG** (our current PhD student) was preparing for the next big step in her education. An Australian university had accepted her to study a PhD programme and the study was supported by a scholarship from the Myanmar government. Mar Lar was excited and ready to take another step closer to advance her profession as a nursing educator. Then, in May, she was diagnosed with breast cancer.

The illness did interrupt Mar Lar's PhD plans as she focused on treatment and rehabilitation; but she did not let cancer to define and limit her. A year after her active cancer treatment ended, Mar Lar obtained the Research Postgraduate Studentship from the University Grants Committee and was accepted by PolyU and became one of our PhD students. She is indeed our first-ever PhD student from Myanmar.

As a breast cancer survivor (BCS), Mar Lar is very eager to find out how other cancer survivors self-manage their health. Her PhD study, conducted in the Oncology Centers of four national hospitals in Myanmar, adopted a convergent mixed methods study design to compare the quantitative and qualitative data for identifying the patterns and factors associated with the self-management behaviours among BCS in Myanmar. The results showed that the BCS frequently engaged in spiritual/religious practices, diet modification, and regular exercise, but less tending to seek psychological therapies. The study also identified an array of influencing factors at the individual, family and healthcare system levels.

At present, there is no self-management intervention programme in Myanmar for BCS. Mar Lar's PhD study provides a comprehensive understanding of self-management behaviours and influencing factors among BCS in Myanmar. In addition, existing interventions focused on physical and emotional management but 'Culturally specific context, such as spiritual care, lifestyles, complementary and alternative medicine, and mindfulness are needed in Myanmar,' said Mar Lar.

Mar Lar believes that her findings can assist healthcare providers to better prepare women for the survivorship period and help BCS enhance their quality-of-life. In a longer run, she hopes that the findings inform the development of a self-management intervention programme in Myanmar.



Ms Mar Lar AUNG (1<sup>st</sup> row, 5<sup>th</sup> from left) and her students. Mar Lar aims to apply the teaching and learning strategies learnt in PolyU to nurture generations of outstanding nursing students in Myanmar.

### **About Ms Mar Lar Aung**

Ms Mar Lar AUNG, our PhD student (Chief Supervisor: **Dr Eileen Cheng**, Assistant Professor; External Supervisor: Dr Shirley Ching). She obtained her Master of Nursing Science (Nursing Administration) degree at Chiang Mai University, Thailand in 2013, and is currently a lecturer of the Fundamental Nursing Department, University of Nursing (Yangon), Myanmar, with over 20 years of teaching experience. The university launched their first PhD programme in 2020 and Mar Lar is one of the backbones of the programme.

## Achievements

### Two researchers/scholars to be honoured by Sigma

Congratulations to *Dr Justina Liu* (Associate Professor) who will be inducted into the 2024 International Nurse Researcher Hall of Fame and *Dr Arkers Wong* (Assistant Professor) awarded the 2024 Emerging Nurse Researcher/Scholars by Sigma Theta Tau International Honor Society of Nursing (Sigma) in July this year.

Dr Liu is the third researcher of the School, following *Claudia Lai*, currently *Honorary Professor* and *Alice Yuen Loke*, currently Professor of Practice; to be honoured by Sigma for her significant achievement in nursing research and contribution to nursing development. Dr Wong will be our second Emerging Nurse Researcher/Scholar recognised by Sigma.



### Virtual Hospital bagged President's Award

Following the receiving of the Faculty Award in Teaching, the Virtual Hospital team led by *Dr Kitty Chan*, Associate Professor of Practice, (Team members including *Dr Justina Liu* & *Dr Kin Cheung*, Associate Professors, *Mr Timothy Lai*, Associate Professor of Practice, *Dr Patrick Kor*, Assistant Professor) has received the PolyU President's Award for Outstanding Teaching Achievement 2023 (Team Awards) in recognition of their significant contribution to healthcare education through their innovative Virtual Hospital learning system [HK Short-term Patent: HK30083446]. This is the fifth award the team has received since the launching of Virtual Hospital in 2022. Congratulations!



## School Head named Endowed Professor in Health and Longevity



Congratulations to Prof. Janelle Yorke!

Prof. Janelle Yorke, Chair Professor of Nursing and Head of the School, has been named Angel S. P. Chan Lau Professor in Health and Longevity (劉陳小寶健康延年教授) in honour of the donor of the PolyU endowed professorship, Mrs Angel Lau, Chairman and CEO of Squina International Group Limited.

The PolyU Endowed Professorship Scheme, established in 2012, provides donors with the unique opportunity to partner with the University to advance research and academic activities of a discipline of their choice. The endowed donation given to the School will *advance our* research in physical wellness and longevity.

## Undergraduate students awarded for outstanding performances

Photo 1: Mr Wai-chun Tso (5<sup>th</sup> from left), a final year student on the BSc in Nursing (articulation) programme received the Outstanding Student Award 2023 and Mr Killian Tang (4<sup>th</sup> from left), a year-4 student on the BSc in Nursing programme received the Presidential Student Leadership Award on 26 March. Both awards are at the departmental level. Ms Hiu-ching Cheung, a year-1 student on the BSc in Nursing programme was awarded the Hong Kong Jockey Club Striding On Scholarship 2023 in recognition of her academic excellence and community service.



## Appointment

- Dr Shanshan Wang, Assistant Professor, has been appointed Editor in Chief for a book *Writing and Publication of Nursing Papers in International Journals*, which will be published by People's Medical Publishing House Co., LTD.

## Alumni News

### 23 March

Dr Wah-kun Danny Tong (mid, first row 5<sup>th</sup> from left), our alumnus, Chief Manager (Nursing)/Chief Nurse Executive of the Hospital Authority, was invited to share his nursing career experience. About 180 students participated in the talk and engaged in a meaningful discussion with Dr Tong about nursing development.



### 11 April

Twelve undergraduate nursing students received a monetary support of HK\$1,000 each from the Senior Student Nurse Leader Programme scholarship scheme, donated by the Alumni Association of Nursing Studies (AANS). The Senior Student Nurse Leader Programme has been implemented in the subject *Fundamentals of Nursing Therapeutics I* to enhance the practical skills of junior students, under the guidance of the student nurse leaders. The programme also aims at promoting personal growth and leadership skills among the student leaders.





## Visitors

6 Mar

Delegates from JC Beauty Charity Foundation



## Current Issues

29-30 Nov 2023

To raise PolyU students' awareness on mental health challenges, our year-three mental health nursing students gave talks to all students about the causes and care of different mental health disorders at the Resilient Students Training Hub (ReST Hub), a five-year initiative made possible by the Seal of Love Charitable Foundation.



## 2024

21 Feb

Ten staff members were awarded the PolyU Long Service Awards 2023. They are: Dr Doris YP Leung, Associate Professor; Dr Patrick Kor, Assistant Professor; Mr Timothy Lai & Mr Kevin Leung, Associate Professors of Practice; Dr Ko Ka Yan, Dr Lily Ho & Ms Esther Chan, Assistant Professors of Practice; Dr Li Sijian, Senior Teaching Fellow; Mr Aero Li, Executive Assistant; and Ms Kem Ng, Office Assistant.



Mr Kevin Leung (1<sup>st</sup> from left) and Mr Timothy Lai (1<sup>st</sup> from right) took a photo with Professor Jin-Guang Teng (mid), President of PolyU.

6 Mar

Mr Hin-fun Anthony Tsang (2<sup>nd</sup> from left, dress in grey suit) and Ir Wing-hoo, Billy Wong, BBS, JP, (1<sup>st</sup> from right, dress in grey suit), Board Members of the Hospital Authority



27 Mar

A delegation from Gansu Provincial Nursing Association, Mainland China



24 Feb

Dr Eileen Cheng, Assistant Professor was an invited plenary speaker for the 19<sup>th</sup> Hong Kong Palliative Care Symposium, organised by Society for the Promotion of Hospice Care. She spoke about the needs of caregivers in palliative care.



4 Mar

The School signed a memorandum of understanding (MoU) with Mahidol and Thammasat Universities, Thailand. The MoU is intended to strengthen our academic, education and research collaborations, as well as to pave ways for the launching of the service-learning programme at the nursing homes in Thailand, in summer during the 2024-25 academic year.



Associate Professor, Dr Kwanjai Amnatsatsue (Sitting in the second row, dress in yellow), Head of the Department of Public Health Nursing, together with her faculty and PhD students from the Faculty of Public Health, Mahidol University.



(Front row, dress in yellow) Assistant Professor, Pregamol Rutchanagul, Dean, together with her faculty and the undergraduate students (right side) from Faculty of Nursing, Thammasat University.

1 & 6 Mar

Photo 1: Prof. Frances Wong, Chair Professor of Advanced Nursing Practice & Associate Dean [FHSS]), delivered two lectures at Shanghai Jiao Tong University (上海交通大學), Mainland China, on 1 March. Her first lecture for the postgraduate students was about advanced nursing practice and development. The second lecture titled 'Challenges of Healthcare in an Aging Era' attracted 40 delegates on-site and another 3,524 online audiences within the Mainland. It was well received with a lot of positive feedback.

Photo 2: Prof. Frances Wong and Dr Eva Ho, Associate Professor, visited Fujian Medical University (福建醫科大學) on 6 March to discuss research collaboration between the university and PolyU. During the visit, Dr Ho provided consultation sessions to the postgraduate students and Prof. Wong was invited to give a keynote speech in the Renowned Scholar Forum, which was related to chronic disease management and transitional care.



1



2

13 Mar

Prof. Janelle Yorke and our administrative staff enjoyed a spring lunch that aimed to recognise the hard work and dedication of the staff.



19 Mar

Dr Kin Cheung, Associate Professor, was an invited speaker for the Sharing Session on Good Practices on Credit Accumulation and Transfer (CAT) under the Qualifications Framework (QF) organised by the Qualifications Framework Secretariat, the Education Bureau. She spoke about the good practices on CAT at higher education institutes.



From left: 1<sup>st</sup> Mr Steve Lai, General Manager, Qualifications Framework Secretariat, 3<sup>rd</sup>, Dr Kin Cheung; 4<sup>th</sup> Mr Kasper Ng, Principal Assistant Secretary, Education Bureau; 6<sup>th</sup>, Mr Albert Chow, Executive Director, Hong Kong Council for Accreditation of Academic and Vocational Qualifications.

6 Apr

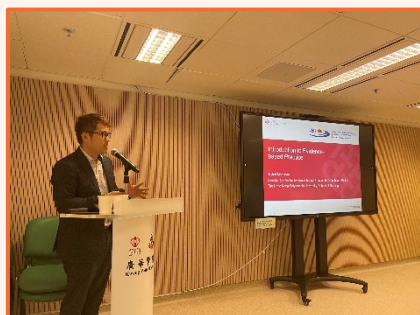
The School co-organised the 2024 Postgraduate Interdisciplinary Learning Conference hosted by Lingnan University. Under the theme 'Reimagining Postgraduate Studies in the New Digital Age', Prof. Angela Leung gave a keynote speech on potentials of the use of technology in supporting healthy aging. She shared her research team's experience in exploring the use of an intelligent interactive social robot in seniors' homes. Dr. Kin cheung, Associate Professor, Dr. Betty Chung, Assistant Professor of Practice, and Dr Winsome Lam, Assistant Professor chaired the panel sessions respectively and led the postgraduate students to engage in in-depth discussions.



From right: 4<sup>th</sup>, Prof. Angela Leung; 1<sup>st</sup>, Dr. Kin cheung; and 2<sup>nd</sup>, Dr. Betty Chung.



Dr Winsome Lam (1<sup>st</sup> from right) chaired the panel session at the conference.



22 Apr

Dr Jed Montayre, Associate Professor, Director of the Centre of Evidence-based Practice for Health Care Policy (A JBI Affiliated Group) was an invited speaker for the lecture series on evidence-based practice at Kwong Wah Hospital.

3 May

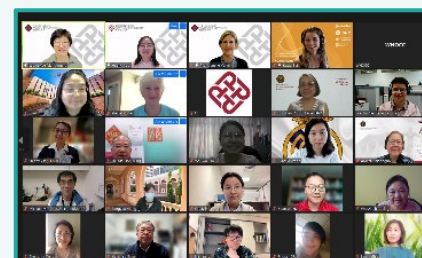
The School's held an appreciation ceremony to express thankfulness to our clinical partners for their coordinating work in the provision of venues for fulfilling the demands of students' clinical practicum; and support in developing our students' competence in both practical and interpersonal skills. Over 56 partners, representing 27 hospitals and 3 community organisations attended the event.



## Webinars organised by WHO Collaborating Centre for Community Health Services

23 Feb

Embracing Ageing in the Western Pacific: Community-based Solutions and Evidence-based Care Model



Top row, from left: 3<sup>rd</sup>: Prof. Janelle Yorke and 4<sup>th</sup>: Dr Kasia Bail.

**Topic:**  
**Implementation of e-PROMs into routine clinical care: experience from a UK comprehensive cancer centre**

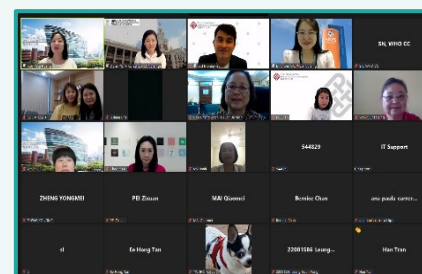
**Speaker:**  
Prof. Janelle Yorke, Chair Professor of Nursing and Head, School of Nursing, PolyU

**Topic:**  
**Healthy ageing research: exploring dignity of risk and supported decision making**

**Speaker:**  
Dr Kasia Bail, Professor of Gerontological Nursing University of Canberra and ACT Health, Australia

19 Apr

Embracing Ageing in the Western Pacific: Community-based Solutions and Evidence-based Care Model



Top row: Prof. Doris Yu (2<sup>nd</sup> from left); Dr Vivien Wu (4<sup>th</sup> from left).

**Topic:**  
**An evidence-based care model based on WHO-ICOPE to increase the preparedness for healthy aging**

**Speaker:**  
Prof. Doris Yu, School of Nursing, Li Ka Shing Faculty of Medicine, The University of Hong Kong

**Topic:**  
**Community-based e-health programme to empower older Adults on self-management of chronic conditions**

**Speaker:**  
Dr Vivien Wu, Assistant Professor, Alice Lee Centre for Nursing Studies, Yong Loo Lin School of Medicine, National University of Singapore