

# SN NEWSLETTER

*“To excel in Nursing for the well-being of mankind”*

COVER STORY

## SN effort in fighting against COVID-19



In March, the fifth-wave of the COVID-19 outbreak swept Hong Kong, with skyrocketing number of infections in the city, which overwhelmed medical facilities and residential care homes. The School of Nursing stood at the forefront and put extraordinary efforts in organising nursing support to district healthcare centres/hospitals and hotline centres, training health care workers in residential facilities to manage daily infection control issues, and providing timely psychological support to relieve people’s stress triggered by the pandemic.

The operating of the Caroline Hill Road Pop-up Community Vaccination Centre by the School is a recognition of our professional ability in swiftly responding to the rapidly changing pandemic situation and community needs. This chronological review of the events marks the outstanding contributions of the School in a very difficult time to the nursing profession and Hong Kong community.

### 21 February

#### Students volunteer in community isolation facility

At the time when Omicron cases hit a new high, the School responded to the invitation of Po Leung Kuk by encouraging senior year nursing students (including mental health nursing) to volunteer in the Choi Wing Road Community Isolation Facility and assist in basic nursing care or administrative duties. At present, our students continue to provide the service.

### 2 March

#### Delivered videos to enhance infection control in RCHs

How to properly implement infection control measures in daily care was an urgent and important issue for local residential care homes and community service centres.

With the support of the School’s Squina International Centre for Infection Control, we responded to the plea for assistance from Po Leung Kuk, an operator of local residential care homes (RCHs) and delivered videos on how to gown up and gown off personal protective equipment and N95 respirators to the RCHs. We particularly refreshed the videos on three care procedures: napkin changing, oral feeding, and nasogastric tube feeding, with emphasis on infection control measures, to guide and update the healthcare workers how to manage every day care and nursing procedures with infection control measures.



Healthcare workers of the residential care homes learnt how to manage infection control issues in every day care procedures through our videos.

### 11 March

#### Distributed medical supplies to nursing homes

Care homes were the epicentre of the Omicron outbreak, accounting for nearly 60 percent of all deaths since January. Upon receiving tons of medical supplies from our donors\*, the School swiftly organised distribution of the supplies to the local nursing homes to support senior or frail residents fighting against Omicron infection. Over 291,000 medical supplies (including 44,000 rapid antigen test kits, 213,600 pieces of respirators/face masks, etc.) reached the hands of staff and residents of over 200 local nursing homes.

\*Zhongnanshan Medical Foundation of Guangdong Province & GuangDong Hecin Scientific Inc., Teochow International Federation & Federation of Hong Kong Chiu Chow Community Organizations, Koch Biotechnology (Beijing), Guangdong Biolight Meditech Co.Ltd., Peking University Alumni Association of Shenzhen, Peking University Alumni Association (HK) Ltd, Wuhan Tianhe Ruiyuan Technology Co., Ltd, Lee Hysan Foundation, GX Foundation, Chow Tai Fook, Greater Bay Area Safety Emergency Industry Technology Alliance, Hong Kong Volunteers Against Coronavirus, and Hong Kong Community Anti-Coronavirus Link.



Ms Hilda Tsang (2nd from left), Research Associate, was the main student coordinator of the activities. Together with 13 undergraduate students, they helped pack and deliver the medical supplies.



Our postdoctoral fellows and a PhD student helped load the medical supplies for transport from the School to the nursing homes.



Prof. Angela Leung [1st right right] helped identify the nursing homes in need; Dr Lin Yang (Associate Professor) [2nd from right], main coordinator of the activities; and Prof Alex Molasiotis, Head of the School of Nursing, handed boxes of rapid antigen test kits to the staff representatives of the nursing home.

*'Our work is minimal and it is even not worth mentioning. Those frontline colleagues working in residential care homes, they are the real heroes in the pandemic. I am glad that we were given the opportunities to help and deliver the donated medical supplies to those heroes to make them feel protected when they were battling against the Omicron.'*

Prof. Angela Leung  
Professor & Associate Head (Research)

**Since March**  
**Students assisted in on-campus PCR tests**

Our postgraduate research students Mr Wilson Kwok and Mr Laurence Parial volunteered to work in the COVID lab of PolyU's Department of Applied Biology and Chemical Technology and support the University Covid-19 RT-PCR test.



Mr Laurence Parial (right) and Mr Wilson Kwok (left) assisted in conducting Covid-19 RT-PCR test at a temporary site on the campus

**19 March**  
**Established call centre to support HA hotlines**

At the time when local hospitals were overwhelmed by soaring Omicron cases, the School set up an on-campus call centre to support the HA (Hospital Authority) hotlines. Ten HA hotlines were operated by the School from 8am to 10 pm with nearly 600 calls each day. Our teaching staff members and final year undergraduate nursing students provided timely support, nursing and infection control advice to infected patients and their families. Our service will continue until the beginning of May this year.



'Your involvement in the anti-pandemic effort will help nurture these young talents into future healthcare professionals' said Prof. Sophia Chan, Secretary for Food and Health, during her visit to the PolyU call centre on 18 March.

*'I remember, still very vividly those voices from our senior clients, filled with concerns, fear and helplessness, when they were infected with COVID-19. I am glad that I could use my knowledge and skills to assess their health conditions and guide them to receive sufficient information.'*

Ms On-ki Lam  
Year-5 student  
BSc (Hons) in Nursing programme

*'I was touched when receiving appreciations from the senior clients who were infected with COVID-19 and were living alone and felt helpless.'*

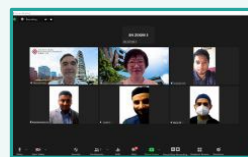
Ms Ivy Wong  
Clinical Associate

*'Through the service, I have learnt that a willingness to lend a listening ear to those in need and respond with kind words and a caring heart are the keys to be a good nurse.'*

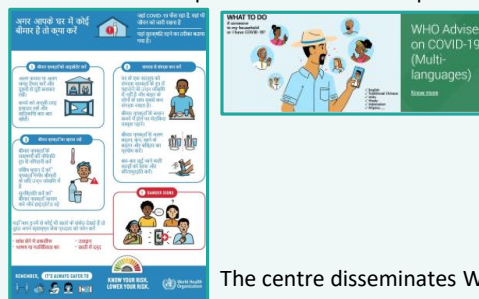
Ms Wing-lam Tse  
Year-5 student  
BSc (Hons) in Mental Health Nursing programme

**19 March-9 April**  
**Webinars to enhance COVID-19 literacy of ethnic minorities**

To enhance COVID-19 literacy and infection control knowledge of ethnic minorities living in Hong Kong, the School's WHO CC for Community Health Services joined hands with ethnic minority organizations (co-organisers): Tung Chung Tamil Muslim Jamath, Dompot Dhuafa Association, Idara Minhaj UI Quran HK, and Ethnic Minority Health and Education Service Hong Kong, to hold a series of COVID-19 webinars. The representatives of the organisations from different communities, were invited to participate in the webinars and provide simultaneous interpretations in different languages (such as Hindi and Urdu) for the events (Click [here](#) for the details). The Centre has also uploaded a series of World Health Organization's (WHO) leaflets in different languages for the public to easily understand the WHO advice on COVID-19 prevention and better prepare to manage the challenges brought by the virus.



The representatives from different cultural background supported the event and provided simultaneous interpretations to enhance participation and learning.



The centre disseminates WHO advice on COVID-19 in different languages.

**23 March**  
**Students supported the community vaccination centre**

Responding to the request of the Sham Shui Po District Health Centre (SSPDHC), forty year-3 nursing students of the BSc (Hons) in Nursing (Senior Year) programme were in the front line to support the community vaccination centre at the SSPDHC. They assisted in eligibility screening, assessed clients' health before obtaining consent for vaccination, administered COVID-19 vaccines to clients under supervision, and observed clients resting at the sickbay for any adverse effects after vaccination. The activity has offered a beneficial opportunity for nursing students to gain hands-on experience and broaden their perspectives in community services.



Prof. Sophia Chan, Secretary for Food and Health, and the staff of the vaccination centre expressed their gratitude to our nursing students for their sincere support.

**25 March**  
**Respirator fit tests in support of HKBU's staff and students at community isolation facility**

The city's overwhelmed healthcare system converged with lack of isolation facilities at caring homes, resulted in hundreds of caring homes recording infection cases. In response to the Government's setting up of community isolation facilities to resolve this crisis, the School joined hands with the School of Nursing, Tung Wah College, to conduct N95 respirator fit tests for over 200 nursing staff and nursing students from Hong Kong Baptist University's School of Continuing Education, to prepare them for serving at the Kai Tai Holding Centre, which accommodates frail senior COVID-19 patients for isolation and temporary care.



(Right photo) 1st row: Dr Shanshan Wang (3rd from left) and Dr Polly Ma (4th from left), Postdoctoral Fellows, supported the School's initiative and volunteered to perform N95 respirator fit tests (Left photo) at the lab.

**28 March****Hong Kong Red Cross COVID-19 Support Hotline & aftercare service to help people coping with COVID-19**

As the number of infected cases were skyrocketing in March, the impact of COVID-19 on people's psychological health was felt in the city, particularly among seniors and their family members. In face of the challenge, Ms Joyce Tang, Clinical Coordinator (Mental Health Nursing) and Dr Bryan Ho, Deputy Programme Leader of the BSc (Hons) in Mental Health Nursing programme initiated to support the Hong Kong Red Cross Covid-19 Support Hotline and aftercare service to provide psychological support, health assessment, as well as education and social services to the public.

Forty-six final year mental health nursing students responded to the call and they completed a refresher class on basic communication and counselling skills prior to the service. Since 28 March, our students have been actively participating in the service to help the community build mental health resilience against COVID-19. We are honoured to receive very positive feedback from the Hong Kong Red Cross commending our support and the service may be extended after April depending on the needs of the community.



In the headquarters of Hong Kong Red Cross, staff members and students joined hands to build mental health resilience in the community against COVID-19.

*'We reassured those clients who experienced mental health crises during quarantine and showed respect, understanding, and empathy to the hotline users and their families. I am glad that I have this opportunity to serve the most vulnerable groups in the society during the pandemic.'*

Ms Carrie Ka-yee Chan  
Final year student  
BSc (Hons) in Mental Health Nursing

**29 March****Launched HK's first-ever school of nursing's operated pop-up community vaccination centre**

The School has demonstrated our strong commitment in supporting Hong Kong to overcome the pandemic by taking up a new and brave role in operating the Caroline Hill Road Pop-Up Community Vaccination Centre (CVC) in Causeway Bay.

The centre, launched on 29 March, is Hong Kong's FIRST school of nursing's operated pop-up community vaccination centre. With the enthusiastic support of our strong-team of 300 students, teaching staff members and alumni, we directly back the Government's campaign in boosting vaccination to protect vulnerable populations against the Omicron infection.

Under the guidance and supervision of our clinical supervisors and alumni, final-year nursing students administer the BioNTech vaccine to clients and observe clients resting at the sickbay for any adverse effects after vaccination. The centre also has a unique role in offering a clinical placement opportunity for our final-year nursing students to gain hands-on experience in community services. At present, the centre has the capacity to serve around 800 to 1,000 clients daily and our service will continue until the end of June this year.

Click [here](#) to view the RTHK TV programme featuring the Caroline Hill Road Community Vaccination Centre, in which Mr Edmond Tong, Senior Clinical Associate, talked about the operation of the centre.



Mrs Carrie Lam, Chief Executive, and Mr Patrick Nip, Secretary for the Civil Service, visited the School-operated vaccination centre and expressed their gratitude towards the School of Nursing and PolyU.

*'As a nurse-to-be, I am grateful to have this opportunity to contribute my skills and knowledge to the vaccination centre and to be a member in the battle against COVID-19'*

Ms Sophia Wu  
Year-5 student  
BSc (Hons) in Nursing programme



*'Through the participation, I hope our students can experience the significant role of nurses in fighting COVID-19.'*

Mr Timothy Lai,  
(In the photo, standing behind a nursing student and giving guidance and support)  
Clinical Associate/Nurse-in-charge of the Caroline Hill Road CVC

## IaH team received Faculty Awards in Teaching

The School's *Internationalisation-at-Home team* (IaH), led by **Dr E Angela Chan**, [Associate Professor & Associate Head (Undergraduate Education)] have been selected to receive the Faculty Award (team award) in Teaching in recognition of their outstanding achievement in 2021. Members of the team includes **Dr Arkers Wong**, Assistant Professor; **Dr Betty Chung**, Teaching Fellow; and **Mr Timothy Lai**, Clinical Associate.

Since 2017, tremendous efforts have been made by the team to nurture student intercultural awareness and sensitivity through Internationalisation of our curricula and the (IaH) activities at undergraduate and postgraduate levels. The School has been collaborating with Malmo University, Sweden; and La Trobe University, Australia to expand student learning experience. National University of Ireland, Galway; and National University of Singapore, have added to our list of collaborators in 2022 for enriching the postgraduate learning experience.

At the undergraduate level, the team have been fostering inter-cultural learning in the subject *Nursing Therapeutic II*. Through student-led group webinars and group reflection sessions, students are equipped with an ability to solve complex local and global clinical situations.

To enhance visual learning and students' understanding of non-verbal interactions with cultural sensitivity, since September 2021, the School has been implementing the IaH activity through student created video-based simulated scenarios. The videos have captured the nuances of clinical interactions among nursing students in three different places/cultures and shown how the students used their gestures and facial expressions to interact and communicate with the 'patients' (role-played) and performed nursing tasks. This teaching and learning strategy enables students to learn from each other in various clinical practices across different cultural contexts and helps them enhance skills on teamwork, communication, decision and leadership.

At the postgraduate level, the IaH course *Cultural Awareness in Health and Social Care Research* offers a unique opportunity for PolyU students to work together with students from Malmo and La Trobe universities to explore complex ethical issues. The course aims to help students integrate international and intercultural dimensions into their research knowledge and skills. It includes five international research student webinars, led by faculty members of the School and our partnering universities. Ethical/cultural dilemmas associated with nursing professional or research practices are presented to students in each webinar for discussion and reflection.

Until now, seven articles were published by the team and their papers were presented at four conferences. The team hopes that their research findings will contribute to the continuous refinement of local or international undergraduate and postgraduate courses.



Student-created and video-based simulated scenarios help undergraduate students learn in various clinical practices across different cultural contexts and develop an ability to solve complex local and global clinical situations.



Led by the faculty members, postgraduate students discussed and reflected various ethical/cultural dilemmas associated with nursing professional or research practices at the international research student webinars.

## Projects received external funding support

Project Title	Principal Investigator	Funding Source	Total Grant (HK\$)
Emotional health preservation in Chinese Medicine for depression: course development and pilot testing	Dr Jerry Yeung Associate Professor	Chinese Medicine Development Fund - Industry Support Programme	992,576
Effectiveness of caregiver-administrated acupressure intervention for community-dwelling spinal cord patients with constipation: A randomized controlled trial	Dr Yan Li Research Assistant Professor	Chinese Medicine Development Fund - Industry Support Programme	810,590
Evaluating the efficacy of Transcranial Pulse Stimulation (TPS) on individuals with Autism Spectrum Disorder (ASD)- A double-blinded, randomized, sham-controlled trial	Dr Teris Cheung Assistant Professor	Associated Medical Supplies Co. Ltd.	300,000
Health and social needs of persons living in subdivided units: A mixed-method study	Dr Arkers Wong Assistant Professor	National Institute for Health and Care Excellence (NICHE) Research Grant NICHE Research Grant	120,000
Effects of Facebook-based bibliotherapy on improving the wellbeing of informal caregivers of people with dementia: a pilot randomized controlled trial	Dr Shanshan Wang Postdoctoral Fellow	NICHE Research Grant	120,000
The presence of humanoid robot with older adults at homes	Prof. Angela Leung Professor & Associate Head (Research)	Research Matching Grant Scheme (RMGS)	100,000

## Projects received internal funding support

Project Title	Principal Investigator	Funding Source	Total Grant (HK\$)
Acupoint herbal plasters for insomnia in peri-menopausal women	Dr Jerry Yeung	A project of PolyU's Research Centre for Chinese Medicine Innovation	958,739
Using functional magnetic resonance imaging (fMRI) to assess the effects of Acceptance and Commitment Therapy for smoking cessation and reduction of psychotic symptoms in patients with schizophrenia	Dr Yim-wah Mak Associate Professor	A project of PolyU's Mental Health Research Centre	217,000



## Stand-alone therapeutic Music-with-Movement programme for older adults with cognitive impairment

Older adults with dementia experience anxiety, depression, or other behavioral and psychological symptoms. To reduce these symptoms, as well as help caregivers manage stress of caregiving, **Dr Daphne Cheung** (Principal Investigator; Assistant Professor) **and her team\*** developed the first-of-its-kind interactive Music-with-Movement (MwM) System that integrates modern technology. The system will be implemented in about 50 institutes (including community service centers and residential care homes) and 1,000 older adults with dementia will participate in this new innovative MwM System. It is expected that the results will show positive health outcomes in multiple areas, such as cognition, mood, and agitation.

The MwM system was created with the support of HK\$ 4.75 million from the Innovation and Technology Commission (the Innovation and Technology Fund for Better Living) and HK \$500,000 from the Ho Cheung Shuk Yuen Charitable Foundation.

In addition to the application of augmented reality (AR) technology, the system uses 70 sets of tablets to facilitate the interventions and provide interactive experiences for users. It provides four musical games and the music (mainly pop songs from 1940s to 1980s) were specially selected by registered music therapists to recall participants' memory. User's health conditions and engagement level are tracked by an intelligent cloud-based management platform through the motion sensors embedded in the specifically designed musical instruments.

This project adopts a train-the-trainer approach. Staff at the participating elderly care institutes will be recruited to complete eight sessions of training to take up the role as a facilitator to deliver the MwM activities up to 12 weeks.

Well-being of the participants will be monitored at baseline, post-intervention, and 3-month follow-up. Facilitators' knowledge and attitudes on dementia will also be assessed prior training and post-intervention. The research team is recruiting nursing students to help assess the engagement of older adults during the interventions and the fidelity of facilitators in delivering the interventions.

The School's MwM intervention was developed in 2008. It is Hong Kong's FIRST Music-with-Movement intervention that actively engages people with dementia in activity (not simply receptively listening to music) to improve their wellness. Followed by a series of test with positive results and effectiveness proven, the intervention was implemented in the community in 2018-2019. The new MwM system is a step forward taken by the CGN team to make use of modern technology to enhance participants' engagement in the Music-with-Movement intervention for achieving psychological well-being of people with dementia and their family caregivers.

\*Team members: Dr Lily Ho [Deputy Coordinator; Clinical Associate], Dr Claudia Lai [Honorary Professor], Dr Harry Qin [Associate Professor]. External members: Ir Dr Alan Lam, Chairman of the Board of Logistics and Supply Chain MultiTech R&D Centre, the Board of Hong Kong Academy of Gifted Education, and Chairman of Sengital Group; Prof Ken Ho, Assistant Professor, The Nethersole School of Nursing, CUHK.



With the support of AR technology, participants' engagement using the musical instruments were shown on the plasma display panel.



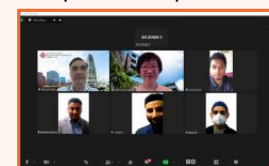
Left photo: The system provides four musical games. Right photo:

Specifically designed musical instruments with sensors to track the engagement level and health conditions of the participants.

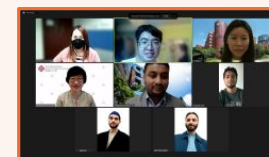
## Webinars to enhance COVID-19 literacy of ethnic minorities

In addition to the regular Embracing Ageing in the Western Pacific webinar, held on 18 March with the topic 'Promoting Aging-in-Place and Infection Control of Aged Care', the Centre joined hands with four ethnic minority organizations (co-organisers): Tung Chung Tamil Muslim Jamath, Dompot Dhuafa Association, Idara Minhaj UI Quran HK, and Ethnic Minority Health and Education Service Hong Kong to hold a series of COVID-19 webinars to enhance COVID-19 literacy and infection control knowledge of ethnic minorities living in Hong Kong. The representatives of different organisations from different communities were invited to participate in the webinars and provide simultaneous interpretations in different languages (such as Hindi and Urdu) for the events.

On 19 March, **Prof. Alex Molasiotis**, Head of the School, gave an overview of the COVID-19 world situations and described the symptoms and its effects on health. He also raised participants' awareness of the risk of severe COVID-19 and provided tips on how to prevent the transmission of the virus.



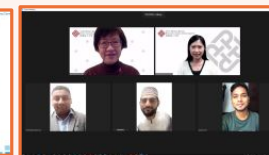
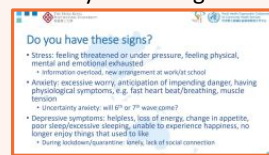
Following the introduction by Prof Alex Molasiotis, **Prof. Angela Leung** (Professor & Associate Head [Research]), talked about home quarantine in the webinar on 19 March. Presented with photos to enhance learning and with the support of simultaneous interpretation, the participants learnt what to do after test positive and what should be done to protect family members who are not infected.



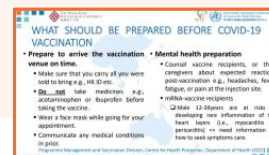
On 26 March, **Dr Margaret O'Donoghue** (Associate Professor), the Director of the School's Squina International Centre for Infection Control, gave a detailed explanation on what is Rapid Antigen Test (RAT), how to choose the RAT kit, when and how to conduct the test, and what is a false positive result.



On 2 April, **Dr Stephanie Szeto**, Research Associate and a Chartered Psychologist (British Psychological Society), taught the participants how to identify signs of experiencing stress, anxiety, and depression and provided tips on maintaining healthy life during COVID-19.



On 9 April, **Dr Dauda Salihu**, Postdoctoral Fellow, gave practical tips on what should be prepared before COVID-19 vaccination and what should be observed after the vaccination



## Adopted ICOPE to assess intrinsic capacity of older people

One of the objectives of the Centre is to actively promote and implement the WHO Guidelines on Integrated Care for Older People (ICOPE). To achieve this, the centre carried out a cross-sectional study in 11 local community centers to assess intrinsic capacity of older people in the community using the WHO ICOPE framework. The findings were published in the April issue of BMC Geriatrics [8;22(1):304. <https://doi.org/10.1186/s12877-022-02980-1>]. Our study showed that the intrinsic capacity impairment in community-dwelling older adults are prevalent, in particular, in locomotor and cognitive capacity. Actions should be taken to slow or prevent the impairment, support self-care and social engagement in old age.

This study also provided clinical placement opportunities for our nursing students to gain hands-on health assessment skills. Recruited nursing students received training to assess older people in the community using the WHO ICOPE framework. A training package adopting the ICOPE approach has been developed.

## Research publications

- Abu-Odah H., Molassiotis A., & Liu J.Y.W. (2022) Gathering policymakers' perspectives as an essential step in planning and implementing palliative care services at a national level: an example from a resource-limited country. *BMC Palliative Care*, 31; 21(1):43. <https://doi.org/10.1186/s12904-022-00936-1> PMID: 35354398
- Abu-Odah H., Molassiotis, A, Liu, J.Y.W. (2022). Assessment of the educational and health care system-related issues from physicians' and nurses' perspectives before developing a palliative care program within the Palestinian health care system: a cross-sectional study. *Journal of Hospice & Palliative Nursing*, <https://doi.org/10.1097/NJH.0000000000000840> (Online ahead of print). PMID: 35085161
- Chen, H. Y., Yeung, W. F., Yang, M. X., Mu, J. L., Ziea, T. C., Ng Bacon, F. L., & Lao, L. X. (2022). Guideline Acupuncture for low back pain: a clinical practice guideline from the Hong Kong taskforce of standardized acupuncture practice. *Chung i tsa chih ying wen pan (Journal of Traditional Chinese Medicine)*, 42(1), 140-147. <https://doi.org/10.19852/j.cnki.jtcm.2022.01.009>
- Cheng, H. L., Lam, S. C., Cruz, J. P., Almazan, J. U., Machuca-Contreras, F. A., Cecily, H. S. J., Rady, H. E. A. E. A., Papathanasiou, I. V., Ghrayeb, F., Qtait, M., Liu, X. L., & Balay-odao, E. M. (2022). Willingness to care for older people and associated factors in pre-registered student nurses: A multi-country survey study. *Nurse Education Today*, 110, [105279]. <https://doi.org/10.1016/j.nedt.2022.105279>
- Ching, S. S. Y., Kwok, W. Y. Y., Ng, J. T. D., Zhang, L. W., Ho, C. S. W. H., & Cheung, K. (2022). University Staff's perceptions of community college transfer students' transition experience within "2+2" pathway in an Asian educational context. *Frontier in Psychology*, 13: 808179. <https://doi.org/10.3389/fpsyg.2022.808179>
- Gan, T., Cheng, H. L., & Tse, M. Y. M. A systematic review of nurse-led dietary interventions for cancer patients and survivors. *Asia-Pacific Journal of Oncology Nursing*. (E-pub ahead of print) <https://doi.org/10.1016/j.apjon.2021.12.013>
- Ho, J. M. C, Wong, A. Y., Schoeb, V., Chan, A. S., Tang, P. M., & Wong, F. K. Y. (2022). Interprofessional team-based learning: a qualitative study on the experiences of nursing and physiotherapy students. *Frontiers in public health*, 9, 706346. <https://doi.org/10.3389/fpubh.2021.706346>
- Ho, K. Y., Lam, K. K. W., Wu, C. S. T., Leung, D. Y. P., Yeung, W. F., Hung, T. M., Ting, S., Tong, M. N., Tang, L. N., & Mak, Y. W. (2022). Utilization of the Youth Quitline as an opportunity for an undergraduate nursing students to deliver smoking cessation counseling as their clinical placement: An implementation of a service-learning model. *Nurse Education Today*, 112, [105330]. <https://doi.org/10.1016/j.nedt.2022.105330>
- Ho, K. Y., Lam, K. K. W., Xia, W., Chiu, S. Y., & Chan, G. C. F. Sleep disruption and its contributing factors in Chinese survivors of childhood cancer: A cross-sectional study. *Psycho-Oncology*. (E-pub ahead of print) <https://doi.org/10.1002/pon.5884>
- Htay, M. N. N., Parial, L. L., Tolabing, M. C., Dadaczynski, K., Okan, O., Leung, A. Y. M., & Su, T. T. (2022). Digital health literacy, online information-seeking behaviour, and satisfaction of Covid-19 information among the university students of East and South-East Asia. *PLOS One*, 17(4), e0266276. <https://doi.org/10.1371/journal.pone.0266276>
- Kor, P. P. K., Liu, J. Y. W., & Kwan, R. Y. C. (2022). Exploring nursing students' learning experiences and attitudes toward older persons in a gerontological nursing course using self-regulated online enquiry-based learning during the COVID-19 pandemic: A mixed-methods study. *Nurse Education Today*, 111, 105301. (E-pub ahead of print) <https://doi.org/10.1016/j.nedt.2022.105301>
- Lam, K. K. W., Ho, K. Y., Wu, C. S. T., Tong, M. N., Tang, L. N., & Mak, Y. W. (2022). Exploring factors contributing to the smoking behaviour among Hong Kong Chinese young smokers during COVID-19 Pandemic: A qualitative study. *International Journal of Environmental Research and Public Health*, 19(7), [4145]. <https://doi.org/10.3390/ijerph19074145>

## Research publications (con't)

- Lam, W. L., Ngan, H. Y. S., Chan, K. K. L., Chen, H., Cheung, C. W., Jiang, F., Wong, C. K. H., Yeung, W. F., & Leo, L. (2022). Combined electroacupuncture and auricular acupuncture to alleviate pain after gynaecological abdominal surgery: a randomised sham-controlled trial (abridged secondary publication). *Hong Kong Medical Journal*, 28(1), 27-30. <https://www.hkmj.org/abstracts/v28%20Suppl%20n1/27.htm>
- Leen, A.J., Yap, D.W.T., Teo, C.B., Tan, B.K.J., Molassiotis, A., Ishiguro, H., Fan, S.W.X., Sundar, R., Soon, Y.Y., Bandla, A. (2022) A systematic review and meta-analysis of the effectiveness of neuroprotectants for paclitaxel-induced peripheral neuropathy. *Frontiers in Oncology*, 11:763229. <https://doi.org/10.3389/fonc.2021.763229>
- Leung, A. Y. M., Su, J. J., Lee, E. S. H., Fung, J. T. S., & Molassiotis, A. (2022). Intrinsic capacity of older people in the community using WHO's Integrated Care for Older People (ICOPE) framework: A cross-sectional study. *BMC Geriatrics*, 22, 304. <https://doi.org/10.1186/s12877-022-02980-1>
- Liu, Z. M., Li, G., Wu, Y., Zhang, D., Zhang, S., Hao, Y. T., Chen, W., Huang, Q., Li, S., Xie, Y., Ye, M., He, C., Chen, P., & Pan, W. (2022). Increased central and peripheral thyroid resistance indices during the first half of gestation were associated with lowered risk of gestational diabetes—analyses based on Huizhou birth cohort in South China. *Frontiers in endocrinology*, 13, 806256. <https://doi.org/10.3389/fendo.2022.806256>
- Meng, W., Lin, W. L., Yeung, W. F., Zhang, Y., Ng, E. H. Y., Lee, Y. P. E., Zhang, Z. J., Rong, J., & Lao, L. (2022). Randomized double-blind trial comparing low dose and conventional dose of a modified traditional herbal formula Guizhi Fuling Wan in women with symptomatic uterine fibroids. *Journal of Ethnopharmacology*, 283, [114676]. <https://doi.org/10.1016/j.jep.2021.114676>
- Molassiotis, A., Kwok, S. W. H., Leung, A. Y. M., & Tyrovolas, S. Associations between sociodemographic factors, health spending, disease burden, and life expectancy of older adults (70 + years old) in 22 countries in the Western Pacific Region, 1995–2019: estimates from the Global Burden of Disease (GBD) Study 2019. *GeroScience*. (E-pub ahead of print) <https://doi.org/10.1007/s11357-021-00494-z>
- Molassiotis, A., & Wang, M. (2022). Understanding and Supporting Informal Cancer Caregivers. *Current Treatment Options in Oncology*, 23(4):494-513. <https://doi.org/10.1007/s11864-022-00955-3> (Epub ahead of print). PMID: 35286571
- Parial L., Lam, S. C., Sumile, E. F., Leung, A. Y. M. (2022). Mix-and-match or mismatch? Exploring the perspectives of older adults about Zumba dance and its potential utilization for dual-task training. *Journal of Aging and Physical Activity* Advance online publication. <https://doi.org/10.1123/japa.2021-0293>
- Qin, Y. J., Liu, J. H., Xie, Y. J., Wang, S. L., Liu, X. L., Loke, A. Y., & Mo, B. R. (2022). Disaster preparedness among populations in Shenzhen, China, with and without chronic disease. *Disaster Medicine and Public Health Preparedness*, 1–8. <https://doi.org/10.1017/dmp.2021.354>
- Said, N.B., Molassiotis, A., & Chiang, V.C.L. (2022) Psychological first aid training in disaster preparedness for nurses working with emergencies and traumas. *International Nursing Review*, <https://doi.org/10.1111/inr.12749> (Online ahead of print). PMID: 35113456
- Tan, J.Y., Molassiotis, A., Suen, L.K.P., Liu, J., Wang, T., & Huang, H.R. (2022) Effects of auricular acupressure on chemotherapy-induced nausea and vomiting in breast cancer patients: a preliminary randomized controlled trial. *BMC Complementary Medicine and Therapies*, 24; 22(1):87. <https://doi.org/10.1186/s12906-022-03543-y> PMID: 35331208
- Tyrovolas, S., Stergachis, A., Krish, V. S., Chang, A. Y., Skirbekk, V., Kisa, A., ... & Ageing Collaborators. (2022). Global, regional, and national burden of diseases and injuries for adults 70 years and older: systematic analysis for the Global Burden of Disease 2019 Study. *BMJ* 376. <https://doi.org/10.1136/bmj-2021-068208>
- Tyrovolas, S., Thomas Tsiampalis, T., Morena, M., Leung, A.Y.M., Faka, A., Chalkias, C., Tsiodras, S., & Panagiotakos, D. (2022). COVID-19 mortality in Europe, by latitude and obesity status: a geo-spatial analysis in 40 countries. *Nutrients*, 14, 471. <https://doi.org/10.3390/nu14030471>
- Wang, M., Pei Z., & Molassiotis A., (2022). Recent advances in managing chemotherapy-induced peripheral neuropathy: A systematic review. *European Journal of Oncology Nursing*, 26;58:102134. <https://doi.org/10.1016/j.ejon.2022.102134>. (online ahead of print). PMID: 35421796
- Wang, M., & Molassiotis, A. Mapping chemotherapy-induced peripheral neuropathy phenotype and health-related quality of life in patients with cancer through exploratory analysis of multimodal assessment data. *Supportive Care in Cancer*. (E-pub ahead of print) <https://doi.org/10.1007/s00520-022-06821-0>
- Wong, A. K. C., Bayuo, J., Wong, F. K. Y., Yuen, W. S., Lee, A. Y. L., Chang, P. K., & Lai, J. T. C. (2022). Effects of a nurse-led telehealth self-care promotion program on the quality of life of community-dwelling older adults: systematic review and meta-analysis. *Journal of Medical Internet Research*, 24(3), [e31912]. <https://doi.org/10.2196/31912>
- Wong, E. M. L., Leung, D. Y. P., Ko, S. Y., Leung, A. Y. M., Lam, S. C., & Cheung, K. C. (2022). Effectiveness of a nurse-led support programme using a mobile application versus phone advice on clients at risk of coronary heart disease – A pilot randomized controlled trial. *Risk Management and Healthcare Policy*, <https://doi.org/10.2147/RMHP.S355554>
- Wong, F. K. Y., Wang, S. L., Ng, S., Lee, P. H., Wong, A., Li, H., Wang, W., Wu, L., Zhang, Y., & Shi, Y. (2022). Effects of a transitional home-based care program for stroke survivors in Harbin, China: a randomized controlled trial. *Age and ageing*, 51(2), afac027. <https://doi.org/10.1093/ageing/afac027>
- Wu, C.S.T., Kwok, W.H., Mak, Y.W., Chiu, P. Y., Chong, Y. K., Suen, K.P., Kam, E., & Wong, K.C. (2022). The impacts of integrated health hydroponic planting on green space exposure, happiness, anxiety and stress among secondary school students: a feasibility quasi-experiment. *International Journal of Nursing and Health Care Research*, 5 (2), 101276. <https://doi.org/10.29011/2688-9501.101276>
- Xie, Y. J., Lin, M., Wong, Y. T., Yan, L., Zhang, D., & Gao, Y. (2022). Migraine attacks and relevant trigger factors in undergraduate nursing students in Hong Kong: A cross-sectional study. *Journal of pain research*, 15, 701–713. <https://doi.org/10.2147/JPR.S337465>
- Yeung, W. F., Yu, B. Y. M., Chung, K. F., Zhang, Z. J., Lao, L., Ho, F. Y. Y., Suen, L. K. P., & Ho, L. M. (2022). Self-administered acupressure for insomnia disorder: A randomized controlled trial. *Phytomedicine*, 99, [153993]. <https://doi.org/10.1016/j.phymed.2022.153993>
- Zheng, Y., Molassiotis, A., Tyrovolas, S., Yip, P.S.F. (2022) Epidemiological changes, demographic drivers, and global years of life lost from suicide over the period 1990-2019. *Suicide and Life-Threatening Behavior*, <https://doi.org/10.1111/sltb.12836> (Online ahead of print). PMID: 35137457

## Staff

- *Prof Alex Molasiotis*, Head of the School, has been appointed as a member to serve on the Biology and Medicine Panel (Joint Research Schemes) of the Research Grants Council (RGC) of Hong Kong. He will serve a term of two years until 2024.
- *Dr Harry Qin* (Associate Professor) and his collaborators had three papers accepted by the 36<sup>th</sup> virtual AAAI (the Association for the Advancement of Artificial Intelligence) Conference on Artificial Intelligence, held from 22 February to 1 March. AAAI is a top conference on artificial intelligence. This year, AAAI received 9,251 papers submissions, of which 9,020 were reviewed and 1,349 accepted (an acceptance rate of 15 percent). The papers presented by Dr Harry Qin and his collaborators proposed a set of innovative AI models for medical image analysis, which make more accurate and efficient diagnosis and treatment planning possible.
- *Ms Phyllis Pang*, Clinical Associate (Supervisors: Dr Daphne Cheung [Assistant Professor] and Dr Vico Chiang [left the School]), completed the Doctor of Health Science (Nursing) offered by PolyU's Faculty of Health and Social Sciences. The title of her dissertation is "A Visual Art Intervention MOLACE for Enhancing the Holistic Well-Being of Older People with Stroke in Residential Care Homes: A Feasibility Study". Congratulations!
- Congratulations to *Mr Bryan Ho*, Clinical Associate, who has completed his doctoral degree.

## Staff movement

- Welcome to *Ms Tiffany Tsoi* who joined the School as Assistant Officer, *Ms Shirley Yeung* as Administrative Assistant, *Ms Wendy Lee* as Clinical Instructor, and *Mr Vincent Cheng* as Assistant Technical Officer.
- Farewell to *Dr Mimi Tse*, Associate Professor; *Mr Samuel Lee*, Technical Support Assistant; *Ms Echo Lau*, Clinical Associate, *Ms Kiki Cham*, Executive Assistant, *Ms Ka-ching Chan*, Executive Officer, and *Ms Chloe Chow* Assistant Officer. We thank them for their contributions during the time with us.
- Congratulations to *Prof. E Angela Chan* on her promotion from Associate Professor to Professor; *Dr Daphne Cheung*, *Dr Grace Ho*, and *Dr Vivian Ngai* on their promotion from Assistant Professors to Associate Professors.

## Alumni

On 26 March, Ms Jullian Hui of the Alumni Association of Nursing Studies (AANS) delivered an online membership promotion talk and interview skills workshop to over 160 final-year undergraduate nursing students.



## Students

### Championship in GBA youth charity project competition

Our year-5 student on the BSc (Hons) in Mental Health Nursing programme, *Ms Ka-yee Chan* and her team members won the championship in the Guangdong-Hong Kong-Macao Greater Bay Area Youth Venture Philanthropy Joint Action (粵港澳大灣區青少年公益創投聯合行動), a Mainland youth charity project competition.

The award-winning disability and health inclusion project (心視界傷健共融計劃) was selected as a five-star project and Ka-yee's team from the Heightened Senses Limited (心視界有限公司) will receive funding amounting to 100,000 yuan from the China Merchants Charity Foundation and Guangdong Yuren Public Welfare Foundation.

Ms Ka-yee Chan co-founded the Heightened Senses Limited to provide tailor-made continuous education, training and working opportunities to the visually impaired. The company promotes social inclusion and healthy lifestyle. The project team hopes that their receiving of the award will enable them to extend their service to mainland China.



Ms Ka-yee Chan (left) took a photo with Dr Sau-fong Leung, Programme Leader of the BSc (Hons) in Mental Health Nursing programme.



**(8 & 19 Feb)**

Dr Yiu-kai Au, Senior Surgeon of International Committee of Red Cross shared his experience of global humanitarian services. Over 300 nursing students attended the online talk.



**(7 Mar)**

More than 120 year-2 nursing students participated in an online workshop on promoting wellness through connecting body and mind in dancing and movements. Ms Crista Kwok, an experienced music and dance-movement therapist, led the workshop.



**(22 Mar)**

Dr Caroline Chui, an experienced nurse educator gave a career talk to 140 year-4 nursing students.



## Current Issues

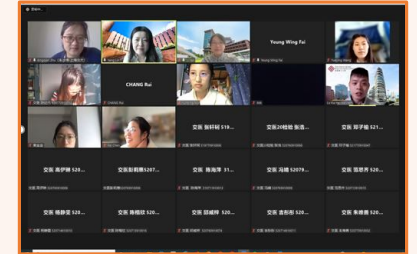


23-25 Feb

The School co-organised the 'Changing Life Stories Conference' with Mother's Choice, which was the first-ever teenage crisis pregnancy conference in Hong Kong.

16 Apr

The online World Sleep Day Scientific Forum was jointly organised by the School and the School of Nursing, Shanghai Jiaotong University. Dr Jerry Yeung (Associate Professor) shared his research finding on self-acupressure for insomnia disorder and Dr Lin Yang (Associate Professor) talked about neighbourhood green space, perceived stress and sleep quality in an urban population.



26 Mar

The School organised the online Greater Bay Area (GBA) Young Nursing Scholars Forum. Prof Alex Molasiotis, Head of the School, delivered an opening speech and Dr Yan Li (Research Assistant Professor) gave a presentation on Psychosocial and Community Care of People with Spinal Cord Injuries for the event. Themed 'From Scientific Research to Clinical Practice', this forum gave an opportunity for early career nurse researchers from various universities/nursing institutions of the GBA to present their research findings. Supported by the UGC Guangdong-Hong Kong-Macao University Alliance Open Bid Funding (Principal investigator: Dr Yan Li), this forum attracted over 8,000 views, participants were primarily clinical nurses and nursing students.



21 Apr

An online information seminar of the MSc in Nursing programme was held. Dr Martin Christensen, Associate Professor & Associate Head (Postgraduate Education), Dr Shirley Ching, the programme leader, and Dr Betty Chung and Dr Vivian Ngai, the deputy programme leaders, shared the programme information with the participants.



8 Apr



The School supported the Social Innovation Symposium (Season 14) as an academic partner. The symposium, organized by PolyU's Jockey Club Design Institute for Social Innovation, explored how to support Small Group Homes, a social service that aims to provide family-like care to children, until they are able to reunite with their families.