

## UMF Equipment –Transmission Electron Microscopy

### BF&DF images, SAED

The JEM-2011 is a multipurpose 120 Kev analytical transmission electron microscope with high resolution pole piece provided large angle tilt. Single tile and double tile holders from JEOL as original configuration are equipped. It is also perfectly compatible with other functional sample holders, which provides solutions to a wide range of applications from materials science to medical/biological studies. Gatan CCD 794 is equipped for digital image.

#### Major Functions:

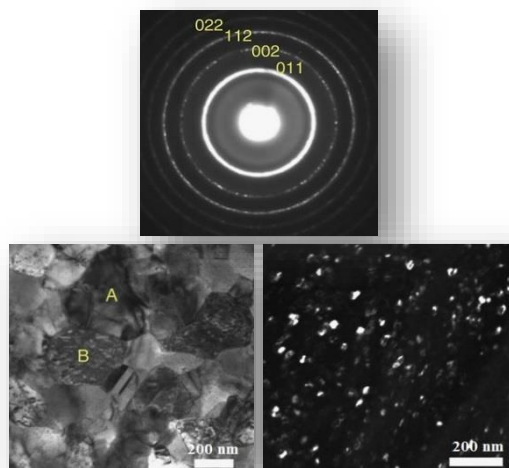
- Bright Field Image
- Dark Field Image
- Selected Area Electron Diffraction
- Low Kev for Bio-Materials

Please refer to <https://www.jeol.co.jp/en/products/detail/JEM-2100Plus.html> for further details of similar system.

For any enquiry, please contact Mr. Mark Lai or Dr. Wei Lu (Tel: 27664422; Email: [mark-kh.lai@polyu.edu.hk](mailto:mark-kh.lai@polyu.edu.hk) or [wei.lu@polyu.edu.hk](mailto:wei.lu@polyu.edu.hk)).



Application:



The select area electron diffract pattern (SAED) and corresponding bright field (BF) and dark field (DF) images of nanocrystal.